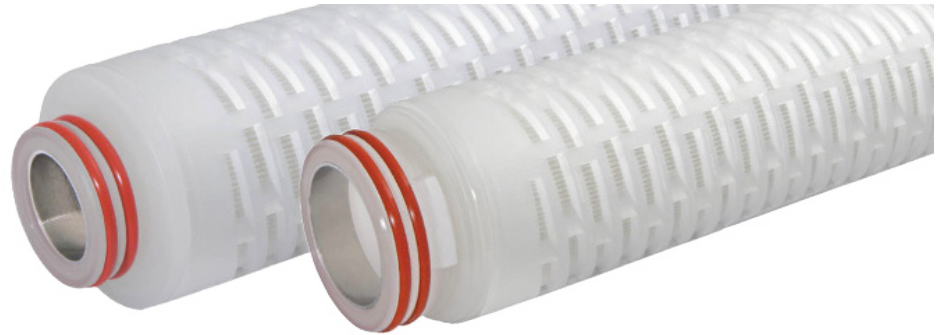
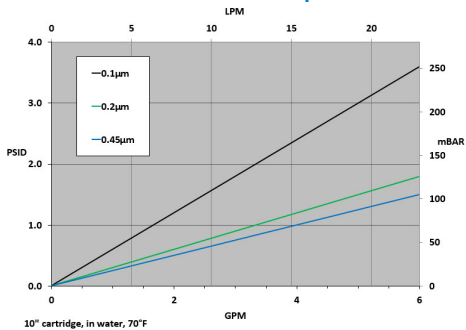


GGPTFE-Series General Grade PTFE

GGPTFE-Series High Purity General Grade PTFE Filter Cartridges, with expanded polytetrafluoroethylene (PTFE) membrane, provide superior chemical resistance for a broad range of industrial applications. With retention ratings as fine as 0.1 μ (100 nanometers), consistent contaminant removal is achieved in aggressive fluids and organic solvents. In air/gas/vent applications, the single-layer PTFE membrane delivers superior hydrophobicity versus polypropylene or PVDF; offering a superior option to preclude water wetting and associated diminished flow. Manufactured in a clean-room environment to maintain high standards of purity and cleanliness.



Flow Rate vs Pressure Drop



Typical Applications

- Aggressive Fluids
- Fermentation Feed Air
- Venting
- Photoresists
- Inert Gases

Construction Materials

Membrane	Teflon®
Support Media	Polypropylene
End Caps	Polypropylene
Center Core	Polypropylene
Outer Support Cage	Polypropylene
O-Rings/Gaskets	Buna, EPDM, Silicone Teflon® Encapsulated Viton® ¹ , Viton®, Teflon® Encapsulated Silicone ²

Dimension (Nominal)

Length	10 to 40 in (25.4 to 101.6 cm)
Outside Diameter	2.7 in (7.0 cm)

Operating Conditions

Change Out ΔP (recommended)	35 PSID (2.4 bar)
Temperature (max)	176°F (80°C)
Differential Pressure (max)	50 PSID at 68°F (3.4 bar at 20°C)

Sanitization/Sterilization

Filtered Hot Water	176°F (80°C) for 30 min
Steaming Sterilization	250°F (121°C) for 30 min multiple cycles

Chemicals: Cartridges are compatible with most chemical sanitizing agents.

Note: Stainless steel insert option required for all cartridges being hot water sanitized or steam sterilized.

Toxicity

All polypropylene components meet the specifications for biological safety per USP Class VI – 121°C for plastics.

Food Safety Compliance

Materials of construction comply with FDA regulations for food and beverage contact use as detailed in the US Code of Federal Regulations, 21CFR. Materials used to produce filter media and hardware are deemed safe for use in contact with foodstuffs in accordance with EU Directives 1935/2004, and/or 10/2011.

Ordering Information

GGPTFE	Rating (μ)	A	Length	C	End Cap Style	O-Rings/Gaskets	-	Options
	0.1		10" (25.4cm)		2 = DOE Flat Gasket ^{1,2}	B = Buna		CS = 316SS Compression Spring
	0.2		20" (50.8 cm)		3 = 222 w/Fin	E = EPDM		I = Stainless Steel Insert
	0.45		30" (76.2 cm)		4 = 222 w/Flat Cap	S = Silicone		
			40" (101.6 cm)		6 = 226 w/Flat Cap	T = Teflon® Encapsulated Viton® ¹		
					7 = 226 w/Fin	V = Viton®		
					24 = 222 w/Hat Cap	Z = Teflon® Encapsulated Silicone ²		
					28 = 222 3-Tabs w/ Fin			

1 - When ordering with DOE Flat Gasket, gasket style "T" = ePTFE (Expanded Teflon® - no encapsulation)

2 - When ordering with DOE Flat Gasket, gasket style "Z" is not available

DISCLAIMER: Filtration data presented is representative of performance observed in controlled laboratory testing. It is not given as a warranty, specification or statement of fitness for use. Specific performance can vary widely depending on contaminant type, fluid properties, flow rates and environmental conditions. It is recommended that users conduct thorough qualification testing to assure the product functions as required. For additional technical support, a product Performance Guide is available upon request.

SV_GGPTFE_082124