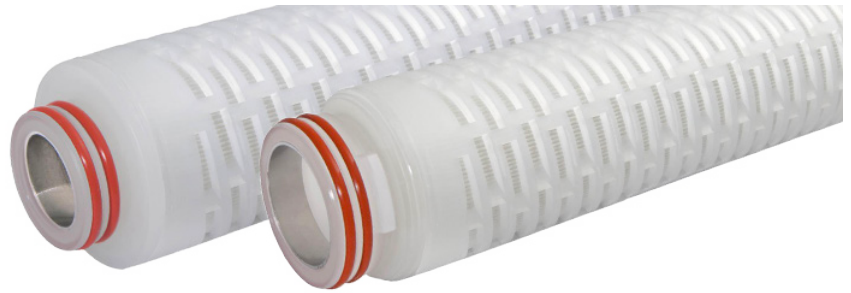
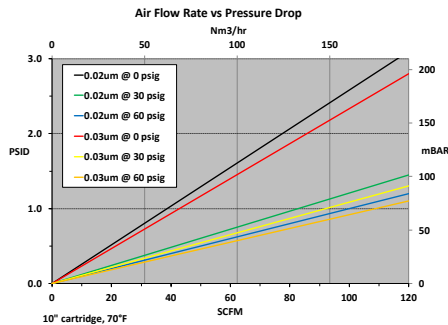


PSH-Series Hydrophobic Polysulfone

PSH-Series High Purity Hydrophobic Polysulfone Membrane Filter Cartridges provide a cost-effective alternative to PTFE or PVDF membrane cartridges for air, bulk gas, and tank vent applications requiring high moisture resistance. The highly asymmetric membrane pore structure provides high flow rate at low pressure drop. Constructed using high purity polypropylene hardware and support layers. PSHSeries cartridges offer outstanding performance value. Manufactured in a clean-room environment to maintain high standards of purity and cleanliness.



Flow Rate vs Pressure Drop



Typical Applications

- Tank Vent
- Fermentation
- Air, Nitrogen, Other Inert Gases

Construction Materials

Membrane.....Hydrophobic Polysulfone
Support Media.....Polypropylene
End Caps.....Polypropylene
Center Core.....Polypropylene
Outer Support Cages.....Polypropylene
O-Rings/Gaskets.....Buna, EPDM, Silicone
 Teflon® Encapsulated Viton®¹, Viton®,
 Teflon® Encapsulated Silicone²

Dimension (Nominal)

Length 10 to 40 in (25.4 to 101.6 cm)
Outside Diameter 2.70 in (7.0 cm)

Operating Conditions

Change Out ΔP (recommended) 35 PSID (2.4 bar)
Temperature (max) 176°F (80°C)
Differential Pressure (max) 50 PSID at 68°F
 (3.4 bar at 20°C)

Toxicity

All polypropylene components meet the specifications for biological safety per USP Class VI – 121°C for plastics.

Food Safety Compliance

Materials of construction comply with FDA regulations for food and beverage contact use as detailed in the US Code of Federal Regulations, 21CFR. Materials used to produce filter media and hardware are deemed safe for use in contact with foodstuffs in accordance with EU Directives 1935/2004, and/or 10/2011.

Ordering Information

PSH	Rating(µ)	A	Length	C	End Cap Style	O-Rings/Gaskets	-	Adders
	0.02		10" (25.4cm)		2 = DOE Flat Gasket ^{1 2}	B = Buna		CS = 316SS Compression Spring
	0.03		20" (50.8 cm)		3 = 222 w/Fin	E = EPDM		I = Stainless Steel Insert
			30" (76.2 cm)		4 = 222 w/Flat Cap	S = Silicone		
			40" (101.6 cm)		5 = 222 w/Spring	T = Teflon® Encapsulated Viton® ¹ ★		
					6 = 226 w/Flat Cap	V = Viton® ★		
					7 = 226 w/Fin	Z = Teflon® Encapsulated Silicone ² ★		
					16 = 213 Internal O-Ring			
					28 = 222 3-Tabs w/ Fin			

1 - When ordering with DOE Flat Gasket, gasket style "T" = ePTFE (Expanded Teflon® - no encapsulation)
 2 - When ordering with DOE Flat Gasket, gasket style "Z" is not available

DISCLAIMER: Filtration data presented is representative of performance observed in controlled laboratory testing. It is not given as a warranty, specification or statement of fitness for use. Specific performance can vary widely depending on contaminant type, fluid properties, flow rates and environmental conditions. It is recommended that users conduct thorough qualification testing to assure the product functions as required. For additional technical support, a product Performance Guide is available upon request.