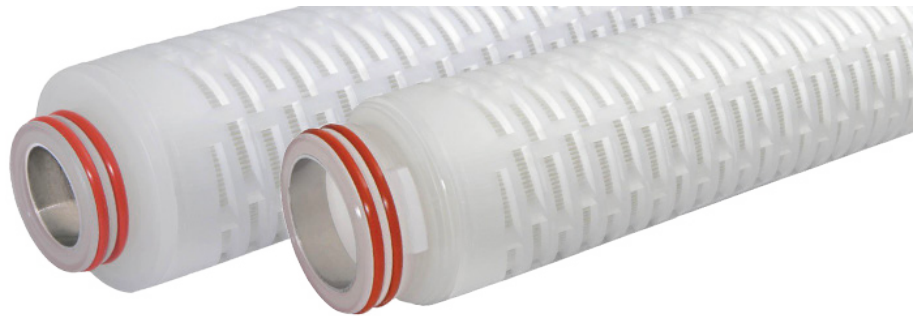


## GFPEs-Series Food and Beverage Grade Polyethersulfone

GFPEs-Series High Purity Food and Beverage Grade Polyethersulfone Filter Cartridges meet the most demanding requirement of the food and beverage industry. The polyethersulfone membrane offers high flux density and low protein-binding and maintains the organoleptic characteristics of the treated product, making it an ideal choice for production of consumables. Cartridges are flushed with ultra-High Purity water to achieve the most stringent requirements for extractable substances. Designed to tolerate repeated hot water sanitization and *in-situ* steam sterilization cycles for maximum service life. Each element is integrity tested to assure optimal performance. Manufactured in a clean-room environment to maintain high standards of purity and cleanliness.

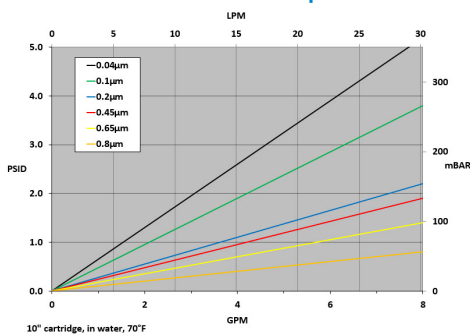


### Microbial Retention Performance

Rating	Challenge Microbe	Log Reduction Value (LVR)
.2µ	<i>Brevundimonas diminuta</i>	7.6
.45µ	<i>Serratia marcescens</i>	6.6
.65µ	<i>Sacchromyces cerevisiae</i>	4.8

\*Independently tested in accordance with STM F838

### Flow Rate vs Pressure Drop



### Typical Applications

- Wine
- Beer
- Juices
- Soft Drinks
- Bottled Water

### Construction Materials

<b>Membrane</b> .....	Polyethersulfone
<b>Support Media</b> .....	Polypropylene
<b>End Caps</b> .....	Polypropylene
<b>Center Core</b> .....	Polypropylene
<b>Outer Support Cages</b> .....	Polypropylene
<b>O-Rings/Gaskets</b> .....	Buna, EPDM, Silicone Teflon® Encapsulated Viton®¹, Viton®, Teflon® Encapsulated Silicone²

### Dimension (Nominal)

<b>Length</b> .....	10 to 40 in (25.4 to 101.6 cm)
<b>Outside Diameter</b> .....	2.7 in (7.06 cm)

### Operating Conditions

<b>Change Out ΔP (recommended)</b> .....	35 PSID (2.4 bar)
<b>Temperature (max)</b> .....	176°F (80°C)
<b>Differential Pressure (max)</b> .....	.50 PSID at 68°F (3.4 bar at 20°C)

### Sanitization/Sterilization

<b>Filtered Hot Water</b> .....	176°F (80°C) for 30 min
<b>Steaming Sterilization</b> .....	250°F (121°C) for 30 min multiple cycles

**Chemicals:** Cartridges are compatible with most chemical sanitizing agents.

**Note:** Stainless steel insert option required for all cartridges being hot water sanitized or steam sterilized.

### Toxicity

All polypropylene components meet the specifications for biological safety per USP Class VI – 121°C for plastics.

### Food Safety Compliance

Materials of construction comply with FDA regulations for food and beverage contact use as detailed in the US Code of Federal Regulations, 21CFR. Materials used to produce filter media and hardware are deemed safe for use in contact with foodstuffs in accordance with EU Directives 1935/2004, and/or 10/2011.

### Ordering Information

GFPEs	Rating(µ)	A	Length	C	End Cap Style	O-Rings/Gaskets	-	Adders
	0.04		10" (25.4cm)		2 = DOE Flat Gasket <sup>1,2</sup>	B = Buna-N		CS = 316SS Compression Spring
	0.1		20" (50.8 cm)		3 = 222 w/Fin	E = EPDM		I = Stainless Steel Insert
	0.2		30" (76.2 cm)		4 = 222 w/Flat Cap	S = Silicone		
	0.45		40" (101.6 cm)		6 = 226 w/Flat Cap	T = Teflon® Encapsulated Viton®¹		
	0.65				7 = 226 w/Fin	V = Viton®		
	0.8				16 = 213 Internal O-Ring	Z = Teflon® Encapsulated Silicone²		
					28 = 222 3-Tabs w/ Fin			

1 - When ordering with DOE Flat Gasket, gasket style "T" is not available  
2 - When ordering with DOE Flat Gasket, gasket style "Z" is not available

DISCLAIMER: Filtration data presented is representative of performance observed in controlled laboratory testing. It is not given as a warranty, specification or statement of fitness for use. Specific performance can vary widely depending on contaminant type, fluid properties, flow rates and environmental conditions. It is recommended that users conduct thorough qualification testing to assure the product functions as required. For additional technical support, a product Performance Guide is available upon request.

SV\_GFPEs\_082224