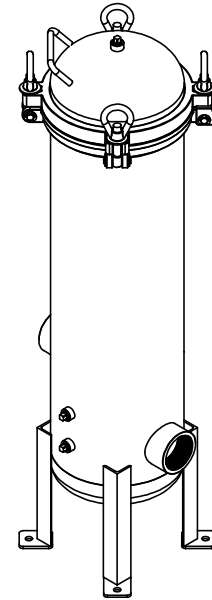


TABULATION		
PART NO.	DESCRIPTION	GLOBAL FILTER MODEL NO.
21281-01	FLTR HSG ASSY, GTCH5 SER, 20", 2" FBSPT, 304 SS, GB, CODE	GTCH522B2415GBCE
21281-02	FLTR HSG ASSY, GTCH5 SER, 20", 2" FBSPT, 304 SS, GB	GTCH522B2415GB
21281-03	FLTR HSG ASSY, GTCH5 SER, 30", 2" FBSPT, 304 SS, GB, CODE	GTCH532B2415GBCE
21281-04	FLTR HSG ASSY, GTCH5 SER, 30", 2" FBSPT, 304 SS, GB	GTCH532B2415GB
21281-05	FLTR HSG ASSY, GTCH5 SER, 40", 2" FBSPT, 304 SS, GB, CODE	GTCH542B2415GBCE
21281-06	FLTR HSG ASSY, GTCH5 SER, 40", 2" FBSPT, 304 SS, GB	GTCH542B2415GB
21281-07	FLTR HSG ASSY, GTCH5 SER, 20", 2" FBSPT, 316L SS, GB, CODE	GTCH522B2615GBCE
21281-08	FLTR HSG ASSY, GTCH5 SER, 20", 2" FBSPT, 316L SS, GB	GTCH522B2615GB
21281-09	FLTR HSG ASSY, GTCH5 SER, 30", 2" FBSPT, 316L SS, GB, CODE	GTCH532B2615GBCE
21281-10	FLTR HSG ASSY, GTCH5 SER, 30", 2" FBSPT, 316L SS, GB	GTCH532B2615GB
21281-11	FLTR HSG ASSY, GTCH5 SER, 40", 2" FBSPT, 316L SS, GB, CODE	GTCH542B2615GBCE
21281-12	FLTR HSG ASSY, GTCH5 SER, 40", 2" FBSPT, 316L SS, GB	GTCH542B2615GB
21281-13	FLTR HSG ASSY, GTCH5 SER, 20", 2" FBSPT, 304 SS, EP, CODE	GTCH522B2415EPCE
21281-14	FLTR HSG ASSY, GTCH5 SER, 20", 2" FBSPT, 304 SS, EP	GTCH522B2415EP
21281-15	FLTR HSG ASSY, GTCH5 SER, 30", 2" FBSPT, 304 SS, EP, CODE	GTCH532B2415EPCE
21281-16	FLTR HSG ASSY, GTCH5 SER, 30", 2" FBSPT, 304 SS, EP	GTCH532B2415EP
21281-17	FLTR HSG ASSY, GTCH5 SER, 40", 2" FBSPT, 304 SS, EP, CODE	GTCH542B2415EPCE
21281-18	FLTR HSG ASSY, GTCH5 SER, 40", 2" FBSPT, 304 SS, EP	GTCH542B2415EP
21281-19	FLTR HSG ASSY, GTCH5 SER, 20", 2" FBSPT, 316L SS, EP, CODE	GTCH522B2615EPCE
21281-20	FLTR HSG ASSY, GTCH5 SER, 20", 2" FBSPT, 316L SS, EP	GTCH522B2615EP
21281-21	FLTR HSG ASSY, GTCH5 SER, 30", 2" FBSPT, 316L SS, EP, CODE	GTCH532B2615EPCE
21281-22	FLTR HSG ASSY, GTCH5 SER, 30", 2" FBSPT, 316L SS, EP	GTCH532B2615EP
21281-23	FLTR HSG ASSY, GTCH5 SER, 40", 2" FBSPT, 316L SS, EP, CODE	GTCH542B2615EPCE
21281-24	FLTR HSG ASSY, GTCH5 SER, 40", 2" FBSPT, 316L SS, EP	GTCH542B2615EP



DESIGN CONDITIONS	
CERTIFICATION MARK	OPTIONAL
DESIGN PRESSURE	1.0 MPa @ 120° C (145 psi @ 250° F)
MAWP	1 MPa (145 psi)
WORKING PRESSURE	1 MPa (145 psi)
WORKING TEMP. AQUEOUS	0~100° C (32~212° F)
WORKING TEMP. EDIBLE OIL	0~120° C (32~250° F)
CORROSION ALLOWANCE	0
NONDESTRUCTIVE EXAMINATION	NA
JOINT EFFICIENCIES	0.7 (HEAD 0.85)
MEDIUM	LIQUID GROUP 2
DESIGN TEMPERATURE	120° C (250° F)
MDMT	-28° C @ 1.0 MPa (-18° F @ 145 psi)
HYDROSTATIC TEST PRESSURE	1.43 MPa (VERTICAL) (208 psi)
PWHT	NOT REQUIRED
VESSEL WEIGHT	20" - 30.3 Kg (66.8 lbs)
	30" - 34.4 Kg (75.9 lbs)
	40" - 38.5 Kg (84.9 lbs)
WEIGHT FULL WITH WATER	20" - 58.5 Kg (129 lbs)
	30" - 71.7 Kg (158 lbs)
	40" - 84.8 Kg (187 lbs)
VOLUME	20" - 0.028 m³ (1 ft³)
	30" - 0.037 m³ (1.3 ft³)
	40" - 0.046 m³ (1.7 ft³)

- NOTES:
- SEE SHEET 2 FOR BILL OF MATERIALS.
 - MODELS COMPLY WITH REQUIREMENTS FOR DESIGN AND CONSTRUCTION IN ACCORDANCE WITH EU PRESSURE EQUIPMENT DIRECTIVE (PED) AND/OR ASME CODE SECTION VIII.DIV.1 2019 EDITION. CONFER WITH GLOBAL FOR ADDITIONAL DETAILS.
 - UNLESS TOLERANCES ARE INDICATED, ALL DIMENSIONS ARE REFERENCE.

PROPRIETARY AND CONFIDENTIAL
 THE INFORMATION CONTAINED IN THIS DRAWING IS THE SOLE PROPERTY OF GLOBAL FILTER LLC. ANY REPRODUCTION IN PART OR AS A WHOLE WITHOUT THE WRITTEN PERMISSION OF GLOBAL FILTER LLC IS PROHIBITED.

REFERENCE ENGINEERING DRAWING 21281

MATERIAL	
SEE TABULATION TABLE	
FINISH	
SEE TABULATION TABLE	
REV	EC NUMBER
A	EC210812-01
EC HISTORY	
ENG APPR.	EG
NAME	DATE
ME	9-16-21

GLOBAL FILTER LLC

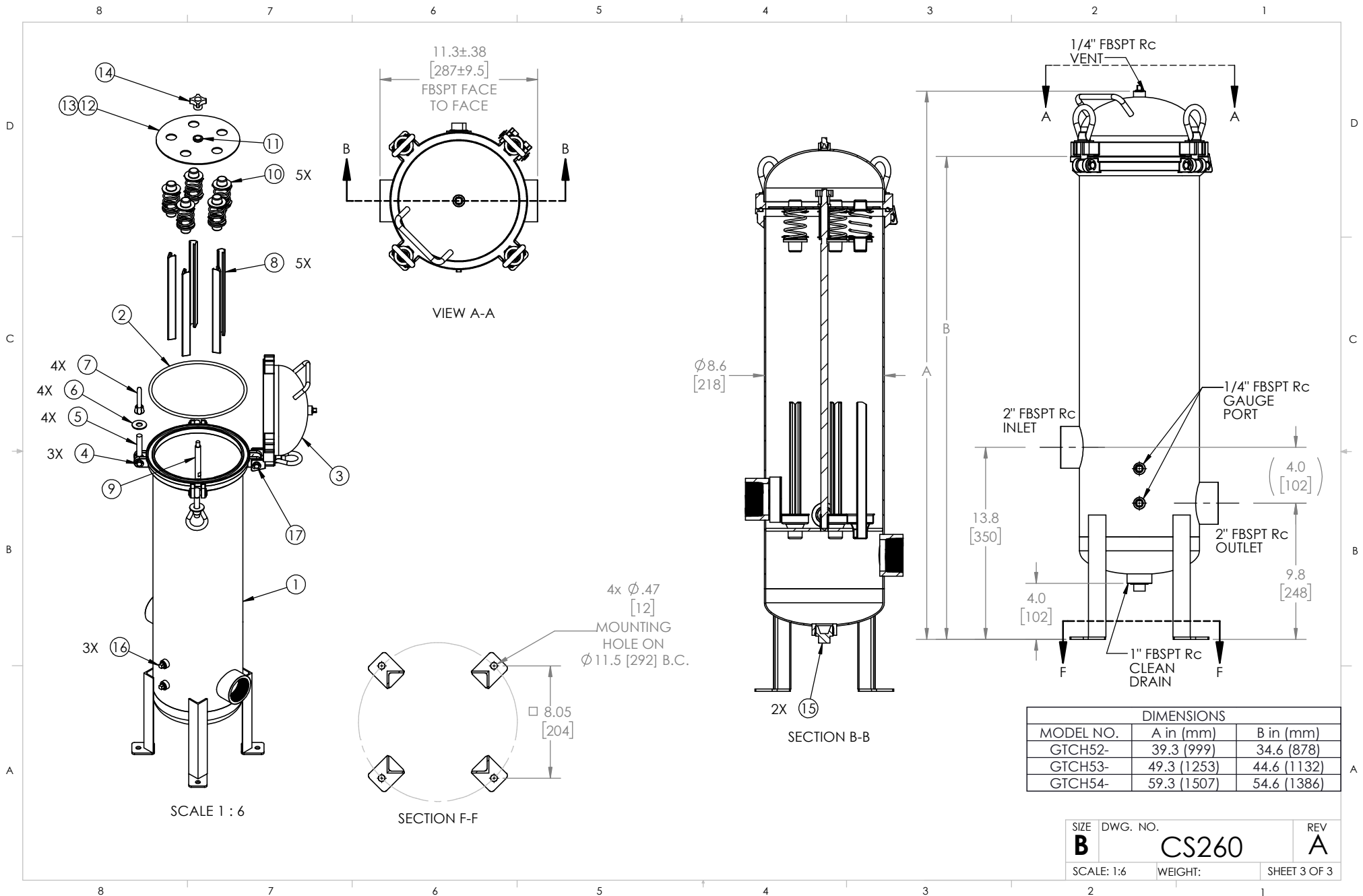
TITLE:
EU FLTR HSG ASSY, 2" FBSPT SISO GTCH5 SER, TAB

SIZE: **B** DWG. NO. **CS260** REV **A**

SCALE: 1:6 WEIGHT: SHEET 1 OF 3

BILL OF MATERIALS		21281-xx																							
ITEM	DESCRIPTION	-01	-02	-03	-04	-05	-06	-07	-08	-09	-10	-11	-12	-13	-14	-15	-16	-17	-18	-19	-20	-21	-22	-23	-24
		QTY	QTY	QTY	QTY	QTY	QTY	QTY	QTY	QTY	QTY	QTY	QTY	QTY	QTY	QTY	QTY	QTY	QTY	QTY	QTY	QTY	QTY	QTY	QTY
D	1	FLTR HSG WLDMNT, 2" BSPT SISO GTCH5 SER, 20" 304 SS	1	1										1	1										
		FLTR HSG WLDMNT, 2" BSPT SISO GTCH5 SER, 30" 304 SS			1	1										1	1								
		FLTR HSG WLDMNT, 2" BSPT SISO GTCH5 SER, 40" 304 SS					1	1										1	1						
		FLTR HSG WLDMNT, 2" BSPT SISO GTCH5 SER, 20" 316 SS						1	1											1	1				
		FLTR HSG WLDMNT, 2" BSPT SISO GTCH5 SER, 30" 316 SS								1	1											1	1		
		FLTR HSG WLDMNT, 2" BSPT SISO GTCH5 SER, 40" 316 SS									1	1											1	1	
	2	O-RING, METRIC 224 ID X 7 CS, NITRILE	1	1	1	1	1	1	1	1	1	1	1	1	1	1	1	1	1	1	1	1	1	1	1
	3	LID WELDMENT, BSPT GTCH5 SERIES, 304 SS	1	1	1	1	1	1						1	1	1	1	1	1						
		LID WELDMENT, BSPT GTCH5 SERIES, 316 SS						1	1	1	1	1	1							1	1	1	1	1	1
	4	KIT, CLEVIS PEN w/ RETAINING RINGS, 15/32 x 1.75"	2	2	2	2	2	2	2	2	2	2	2	2	2	2	2	2	2	2	2	2	2	2	2
	5	EYE BOLT, 5/8"	4	4	4	4	4	4	4	4	4	4	4	4	4	4	4	4	4	4	4	4	4	4	4
	6	WASHER, FLAT, SS	4	4	4	4	4	4	4	4	4	4	4	4	4	4	4	4	4	4	4	4	4	4	4
	7	EYE NUT, 5/8"-11	4	4	4	4	4	4	4	4	4	4	4	4	4	4	4	4	4	4	4	4	4	4	4
C	8	V-POST, CARTRIDGE VESSELS SERIES, 20", 304 SS	5	5										5	5										
		V-POST, CARTRIDGE VESSELS SERIES, 30", 304 SS			5	5										5	5								
		V-POST, CARTRIDGE VESSELS SERIES, 40", 304 SS					5	5											5	5					
		V-POST, CARTRIDGE VESSELS SERIES, 20", 316 SS						5	5											5	5				
		V-POST, CARTRIDGE VESSELS SERIES, 30", 316 SS								5	5										5	5			
		V-POST, CARTRIDGE VESSELS SERIES, 40", 316 SS									5	5										5	5		
	9	TIE ROD, CARTRIDGE VESSELS, 20", 304 SS	1	1										1	1										
		TIE ROD, CARTRIDGE VESSELS, 30", 304 SS			1	1										1	1								
		TIE ROD, CARTRIDGE VESSELS, 40", 304 SS					1	1										1	1						
		TIE ROD, CARTRIDGE VESSELS, 20", 316 SS						1	1											1	1				
		TIE ROD, CARTRIDGE VESSELS, 30", 316 SS							1	1											1	1			
		TIE ROD, CARTRIDGE VESSELS, 40", 316 SS									1	1											1	1	
B	10	SPRING ASSEMBLY, CARTRIDGE VESSELS, 304 SS	5	5	5	5	5	5						5	5	5	5	5	5						
		SPRING ASSEMBLY, CARTRIDGE VESSELS, 316 SS						5	5	5	5	5	5							5	5	5	5	5	5
	11	HOLD DOWN PLT POST w/ EXT RET RINGS KIT, 304 SS	1	1	1	1	1	1						1	1	1	1	1	1						
		HOLD DOWN PLT POST w/ EXT RET RINGS KIT, 316 SS						1	1	1	1	1	1							1	1	1	1	1	1
	12	HOLD DOWN PLT, CLOSED & DOE, GTCH5 SER, 304 SS	1	1	1	1	1	1						1	1	1	1	1	1						
		HOLD DOWN PLT, CLOSED & DOE, GTCH5 SER, 316 SS						1	1	1	1	1	1							1	1	1	1	1	1
	13	HOLD DOWN FIN CTG, GTCH5 SER, 304 SS	1	1	1	1	1	1						1	1	1	1	1	1						
		HOLD DOWN FIN CTG, GTCH5 SER, 316 SS						1	1	1	1	1	1							1	1	1	1	1	1
	14	TIE ROD NUT, CARTRIDGE VESSELS SERIES, 304 SS	1	1	1	1	1	1						1	1	1	1	1	1						
		TIE ROD NUT, CARTRIDGE VESSELS SERIES, 316 SS						1	1	1	1	1	1							1	1	1	1	1	1
	15	PIPE PLUG, 1" BSPT SQUARE HEAD, 304 SS	2	2	2	2	2	2						2	2	2	2	2	2						
		PIPE PLUG, 1" BSPT SQUARE HEAD, 316 SS						2	2	2	2	2	2							2	2	2	2	2	2
	16	PIPE PLUG, 1/4" BSPT SQUARE HEAD, 304 SS	3	3	3	3	3	3						3	3	3	3	3	3						
		PIPE PLUG, 1/4" BSPT SQUARE HEAD, 316 SS						3	3	3	3	3	3							3	3	3	3	3	3
A	17	KIT, CLEVIS PEN w/ RETAINING RINGS, 15-32 x 2.50"	1	1	1	1	1	1	1	1	1	1	1	1	1	1	1	1	1	1	1	1	1	1	1

SIZE B	DWG. NO. CS260	REV A
SCALE: 1:1	WEIGHT:	SHEET 2 OF 3



SIZE B	DWG. NO. CS260	REV A
SCALE: 1:6	WEIGHT:	SHEET 3 OF 3